

High Precision CNC Lathe

FTC-15

High Performance Lead To Increased Productivity

PRECISION DEFENDER
CNC PRECISION MACHINE SERIES



High Precision CNC Lathe

FTC-15

High Performance Lead To Increased Productivity

Reflect perfect turning ability.

Suitable for machining optical element medical care appliances, automobile (motorbike) , aviation (aerospace) and electronic component.

Artistic design with complete extended function

The FTC series CNC lathe not only provide high stability but also had elegant design, collocate with Automatically machine arm and Barfeeder extended equipment, will increases production efficiency tremendously.



Servo Turret



Ergonomic Control Device



Positioning Accuracy of Laser Inspection

1 Servo Turret

The turret positioning is driven by a servo motor combined with hydraulic locking, providing fast tool change and high positioning accuracy. The servo turret is also excellent for heavy cutting and superior in stability.

2 Manual Hydraulic Tailstock

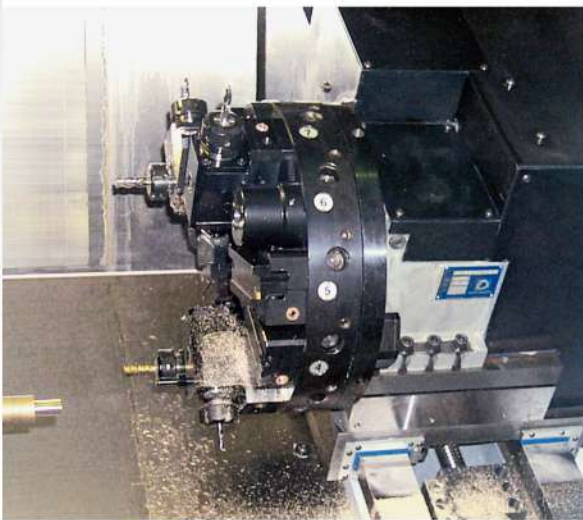
Convenient and Practical Tailstock, friendly sliding and choose standard manual lock type, or optional programmable type.

3 One-Piece Strengthened Cast Body Design

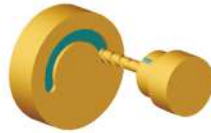
The one piece 30° strengthened casting body can ensure machine rigidity and stability, slideway center and spindle center are symmetrical design, rational allocation of length and width, ensure long time turning to keep high accuracy positioning.



Power tool turret for C axis Machining(optional)



Drawing of C axis Machining



C-Axis Machining



X-C Axis Machining

Tool specifications for C axis

Tool type	FTC-15
O.D tool	□20m/m
Boring tool	φ25
Tool collect	C32- φ10, φ12, φ16, φ20



Z-C Axis Machining

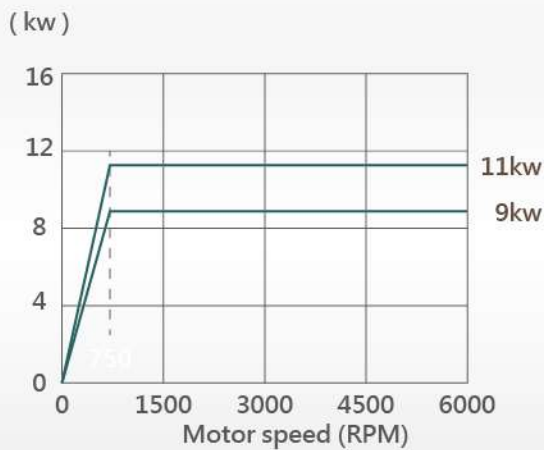
Automatically machine robot (optional)



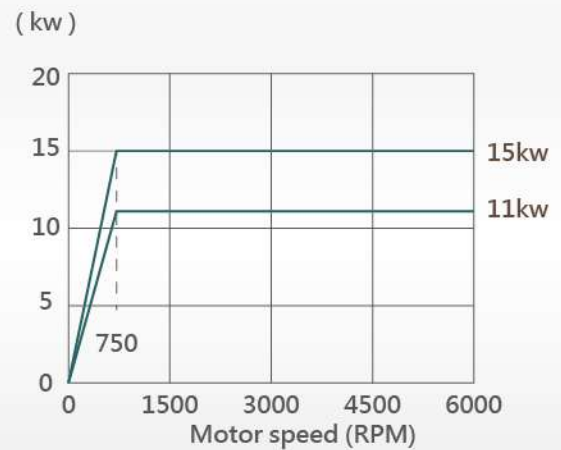
Tool length measurement device (optional)



Bar-feeder (optional)

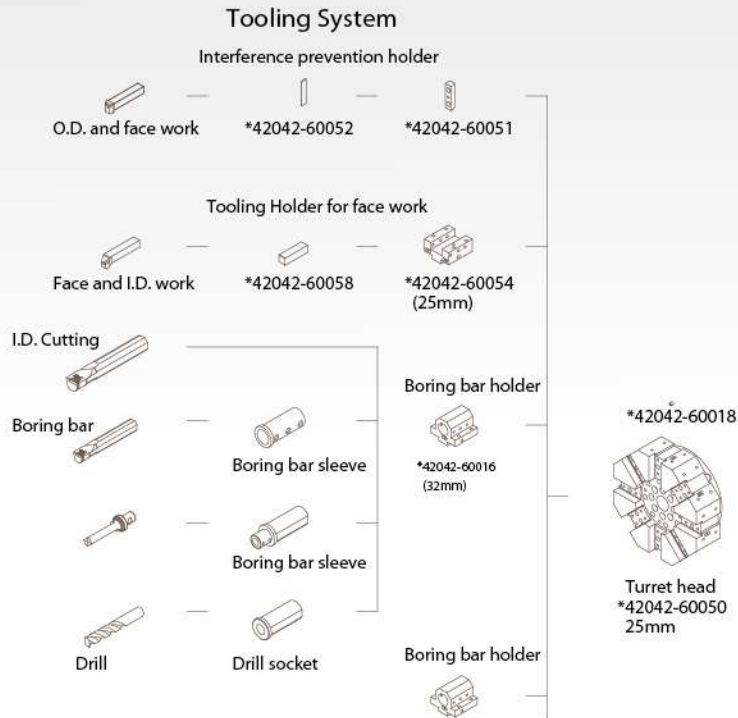


FANUC 18ip/6000 Spindle Motor



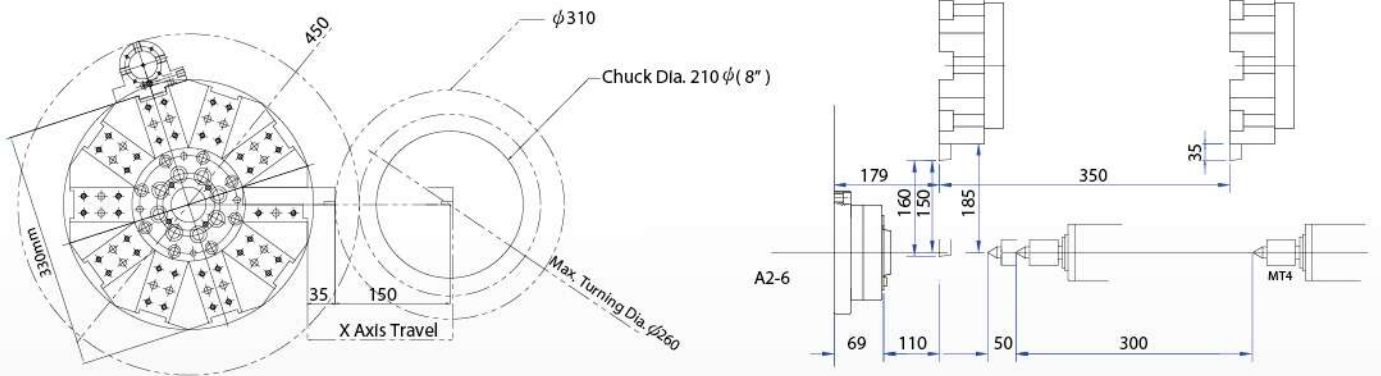
FANUC 22ip/6000 Spindle Motor(OPT)

Tool system

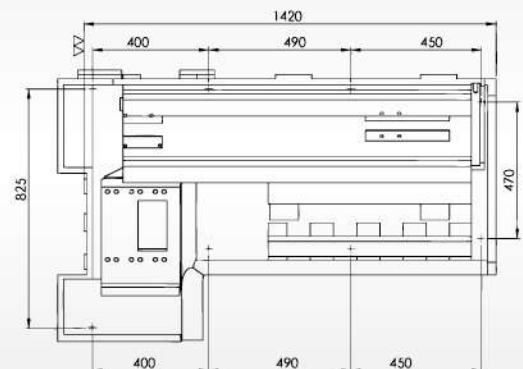
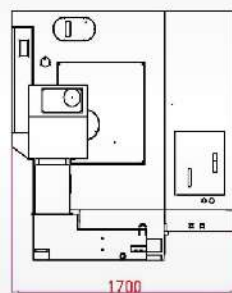
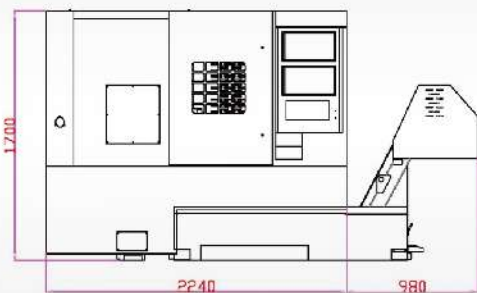


Working Range

FTC-15 Tooling System



Dimensional Drawings



Machine floor space drawing

Foundation bolt

Model

MODEL	Content	FTC-15
Machining Area	Swing over top slide	350mm
	Center distance	450mm
	Standard working Dia	φ210mm
	Maximum turning diameter	φ260mm
	Max. turning length	400mm
Spindle	Spindle motor	AC 11Kw / 15HP (15Kw / 20HP OPT)
	Spindle speed (Max)	4200rpm
	Spindle nose	A2-6
	Spindle hole	65mm / 75mm(OPT)
	Through bar capacity	52mm / 62mm(OPT)
	Front bearing I.D. of SP.	100mm
	Chuck size	8" / 6" (OPT)
Tailstock	Tailstock taper	MT#4
	Tailstock quill Dia.	80mm
	Tailstock quill travel	70mm
Axial Speed	X-axis travel	185mm
	Z-axis travel	420mm
	X-axis rapid speed	20m / min
	Z-axis rapid speed	20m / min
	X,Z servomotor	2.0Kw(2.5 or 3.0 OPT)
Turret	Least input increment	0.001mm
	Tool type	Servo turret
	Square shank tool size	□25mm
	Max. boring tool Dia	φ32mm
	Numbers of tool positions	10 (8 / 12 OPT)
Coolant	Tool change time	1.2sec
	Coolant pump motor	1.5Hp
Machine Dimension	Machine dimensions	225x170x170
	Floor space	3.5mx2.5m
	Package size	325x205 X 205
	Machine net weight	3600kg
	Machine gross weight	3850kg

Standard accessories

- 8" Hydraulic chuck
- 10-position servo turret
- Tool station facing holder 1 set
- Boring tool holder 4 sets
- I.D steeves 8,10,12,16,20,25- each 1pcs
- Soft jaw 1 set
- Hydraulic tailstock
- Removeable coolant tank
- Chip conveyor
- Centralized lubrication system
- Heat exchanger for electrical cabinet
- Foot switch
- RS-232 interface
- Work lamp
- Warning lamp
- Leveling bolt & pads
- Toolbox
- Machine, electrical and instruction manual

Optional Accessories

- 6" Hydraulic chuck
- Work-piece conveyor
- Tool length measurement
- Oil mist filter
- Oil skimmer
- Barfeeder interface
- C-axis Function
- Auto power off
- Programmable tailstock
- VDI turret
- Index type 52, 60 collet chuck (φ52 or φ60)
- Transformer
- Export wooden case

※Sizes and specifications shown in this catalogue are subject to change without prior notice.



Taiwan Office :
No.3-18, Jioushe Rd, Houli Dist,
Taichung County 42148, Taiwan.
TEL : +886-4-25590525
FAX : +886-4-25590387
www.first-chant.com
fce@first-chant.com